

# Fiber Optical Amplifier – 1310nm

(1250-1350nm, SM, PM, 16 dBm)

DATASHEET

BUY NOW



The SOAA provides cost-effective solutions for 1310nm O-band optical amplification. It is a semiconductor with a fiber-coupled waveguide structure. Two configurations are available: Polarization Maintaining (PM) fiber or Single Mode (SM) fiber input/output. It has two package configuration choices. A Benchtop turn-key unit with an adjustable gain is suited for laboratory use. The Benchtop has a computer control interface and GUI. The compact module is suited for system integration with the universal control interface.

The EDFA has isolators on both input and output.

## Features

- 1250-1350nm
- Up to 16 dBm Output
- Customizable
- Turn-Key Benchtop

## Applications

- Communication
- OTDR
- LiDAR
- Instrument

## Specifications

Parameter	Min	Typical	Max	Unit
Wavelength	1250	1310	1350	nm
Input Power	-25	0	5	dBm
Saturated Output Power			16	dBm
Gain Range			20	dB
Noise Figure		7		dB
Gain Ripple		0.3		dB
Polarization Dependent Gain			0.5	dB
Polarization Extinction Ratio	18	20		dB
Input/output Isolation	35			dB
Output Stability (8hrs)			0.2	dB
Adjustable Output Power	10		100	%
Working Temperature	-30		60	°C
Storage Temperature	-40		85	°C
Module Power Supply	DC +5V / GND			
Communication	USB	RS232	LabView	

### Notes:

Preamplifier output power is limited to 25dBm

**Legal notices:** All product information is believed to be accurate and is subject to change without notice. Information contained herein shall legally bind Agiltron only if it is specifically incorporated into the terms and conditions of a sales agreement. Some specific combinations of options may not be available. The user assumes all risks and liability whatsoever in connection with the use of a product or its application.

Rev 04/15/24

# Fiber Optical Amplifier – 1310nm

(1250-1350nm, SM, PM, 16 dBm)



## DATASHEET

### Package Choices

---



Component



Benchtop- USB/GUI

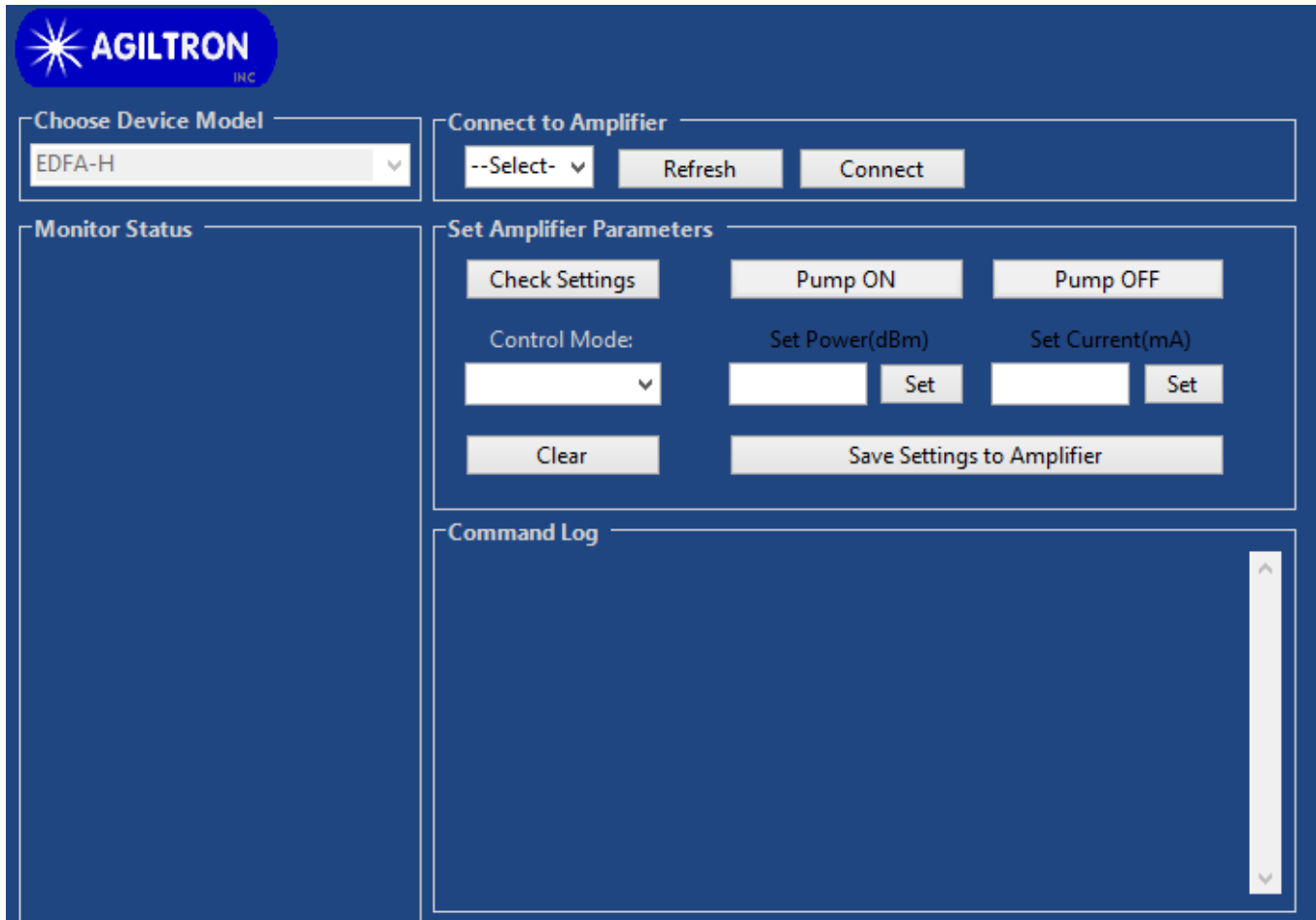
# Fiber Optical Amplifier – 1310nm

(1250-1350nm, SM, PM, 16 dBm)



DATASHEET

## GUI USB Interface



## Operation Instruction

- Load the software, Unzip the folder and Click "setup" to Install the GUI
- Select an amplifier type that matches your PO
- Connect your PC to the Amplifier by first connecting a USB cable and then choosing the necessary port and clicking "Connect". To change the COM port click "Refresh", choose the necessary port, then click "Connect"
- Obtain the stored settings by clicking "Check Settings"
- To change the setting, first select the control mode
- To set up output power or current, input desired value and click "Set". There are limits for max output per the model type.
- To turn on the Amplify click "Pump ON"; the green color should appear. To stop click "Pump OFF"; the red color should appear
- To save the setting click "Save Settings to Amplifier". The Amplifier will store the setting for the next time you turn it on, even without the PC.
- The Amplifier only works if the input optical power level is within the spec.

# Fiber Optical Amplifier – 1310nm

(1250-1350nm, SM, PM, 16 dBm)



## DATASHEET

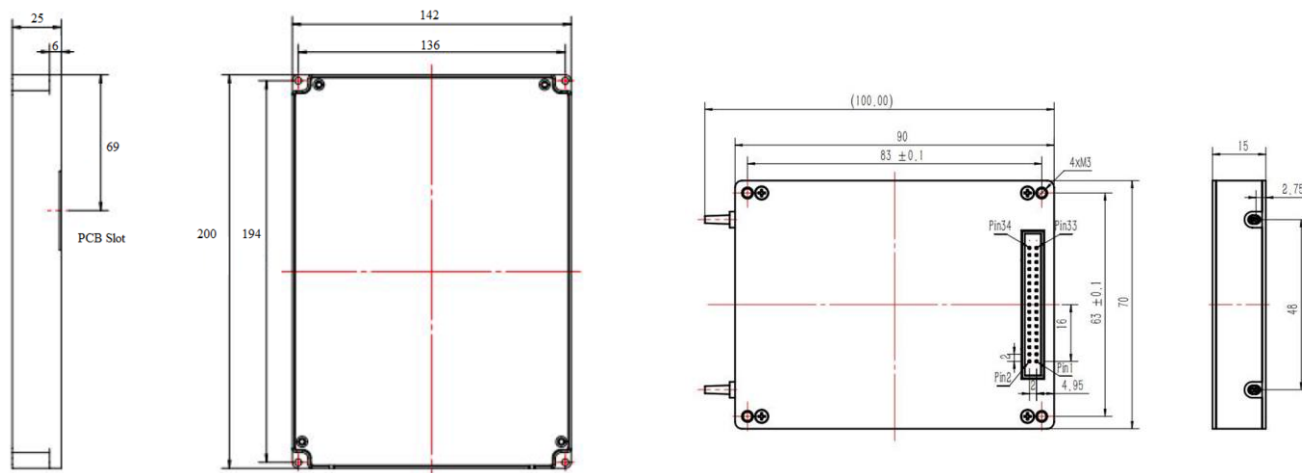
### Control GUI

# Fiber Optical Amplifier – 1310nm

(1250-1350nm, SM, PM, 16 dBm)

## DATASHEET

### Mechanical Dimensions (mm)



\*Product dimensions may change without notice. This is sometimes required for non-standard specifications.

### Ordering Information

Prefix	Type	Wavelength	Power <sup>[1]</sup>	Polarization	Package	Cable Type	Fiber Length <sup>[2]</sup>	Connector	Low Temperature
SOAA-			12 dBm = 1 16 dBm = 2	Polarization = P Random = R	Component = 1 Benchtop = 2	0.9mm tube = 3 Special = 0	0.25m = 1 0.5m = 2 1.0m = 3 Special = 0	None = 1 FC/PC = 2 FC/APC = 3 SC/PC = 4 SC/APC = 5 LC/PC = 7 LC/APC = A LC/UPC = U Special = 0	-5°C = 1 -30°C = 2 Special = 0

[1]. For Booster, Power means maximum output power. For Preamp, Power means maximum amplification gain.

[2]. For >1W modules, the fiber cables extrude out of the front.

**NOTE:**

- Preamplifier output power is limited to 25dBm

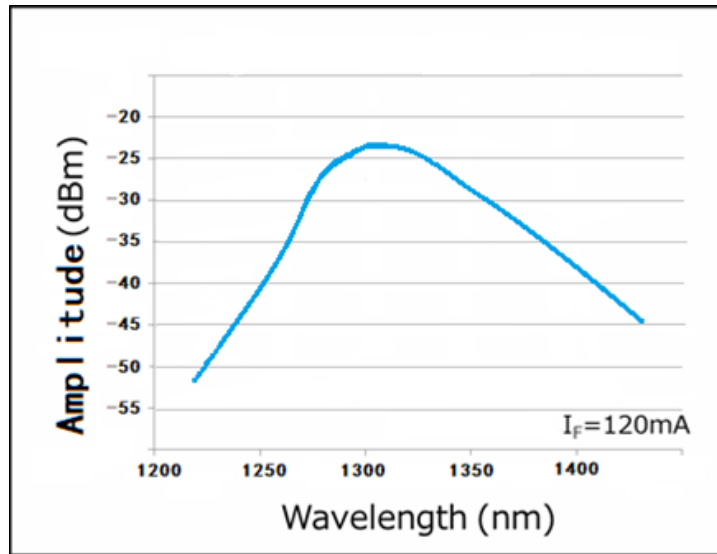
# Fiber Optical Amplifier – 1310nm

(1250-1350nm, SM, PM, 16 dBm)



DATASHEET

## Wavelength Dependence (Typical)



## Application Notes

### Fiber Core Alignment

Note that the minimum attenuation for these devices depends on excellent core-to-core alignment when the connectors are mated. This is crucial for shorter wavelengths with smaller fiber core diameters that can increase the loss of many decibels above the specification if they are not perfectly aligned. Different vendors' connectors may not mate well with each other, especially for angled APC.

### Fiber Cleanliness

Fibers with smaller core diameters ( $<5 \mu\text{m}$ ) must be kept extremely clean, contamination at fiber-fiber interfaces, combined with the high optical power density, can lead to significant optical damage. This type of damage usually requires re-polishing or replacement of the connector.

### Maximum Optical Input Power

Due to their small fiber core diameters for short wavelength and high photon energies, the damage thresholds for device is substantially reduced than the common 1550nm fiber. To avoid damage to the exposed fiber end faces and internal components, the optical input power should never exceed 20 mW for wavelengths shorter 650nm. We produce a special version to increase the handling by expanding the core side at the fiber ends.

# Fiber Optical Amplifier – 1310nm

(1250-1350nm, SM, PM, 16 dBm)

## DATASHEET

### Laser Safety

This product meets the appropriate standard in Title 21 of the Code of Federal Regulations (CFR). FDA/CDRH Class 1M laser product. This device has been classified with the FDA/CDRH under accession number 0220191. All versions of this laser are Class 1M laser products, tested according to IEC 60825-1:2007 / EN 60825-1:2007. An additional warning for Class 1M laser products. For diverging beams, this warning shall state that viewing the laser output with certain optical instruments (for example eye loupes, magnifiers, and microscopes) within a distance of 100 mm may pose an eye hazard. For collimated beams, this warning shall state that viewing the laser output with certain instruments designed for use at a distance (for example telescopes and binoculars) may pose an eye hazard.

Wavelength = 1.3/1.5  $\mu$ m.

Maximum power = 30 mW.



\*Caution - Use of controls or adjustments or performance of procedures other than those specified herein may result in hazardous radiation exposure.  
 \*IEC is a registered trademark of the International Electrotechnical Commission.

### Q&A About Fiber Optical Amplifier

**Q:** Can this amplifier pulsed signals?

**A:** It has been tested to amplify up to 100GHz digital data.

**Q:** Can this amplifier WDM signals?

**A:** It has been tested to amplify signals with DWDM wavelength spacing.

**Q:** Can this amplifier has a flat wavelength response?

**A:** Yes, by put fluttering gain filters, that is an extra cost.

**Q:** If one puts a small signal into it, can it be amplified to the maximum output power indicated on the spec?

**A:** The amplifier is set as an analog mode whose output signal strength is approximately proportional to the input strength. It has a certain gain of about 40dB. There are two types: one is a preamplifier and a booster. One can use a preamplifier before the booster for weak signals, as done in electronic amplifiers.

**Q:** We have an existing amplifier. Can you duplicate it?

**A:** Yes, we can produce it with a seamless software interface.